



# LIFE JACKET RACK PARTNERSHIP

LOWER GRANITE NRM, WALLA WALLA DISTRICT, NORTHWESTERN DIVISION



US Army Corps  
of Engineers®

**WHO:** Lower Granite NRM & Whitman County Public Health

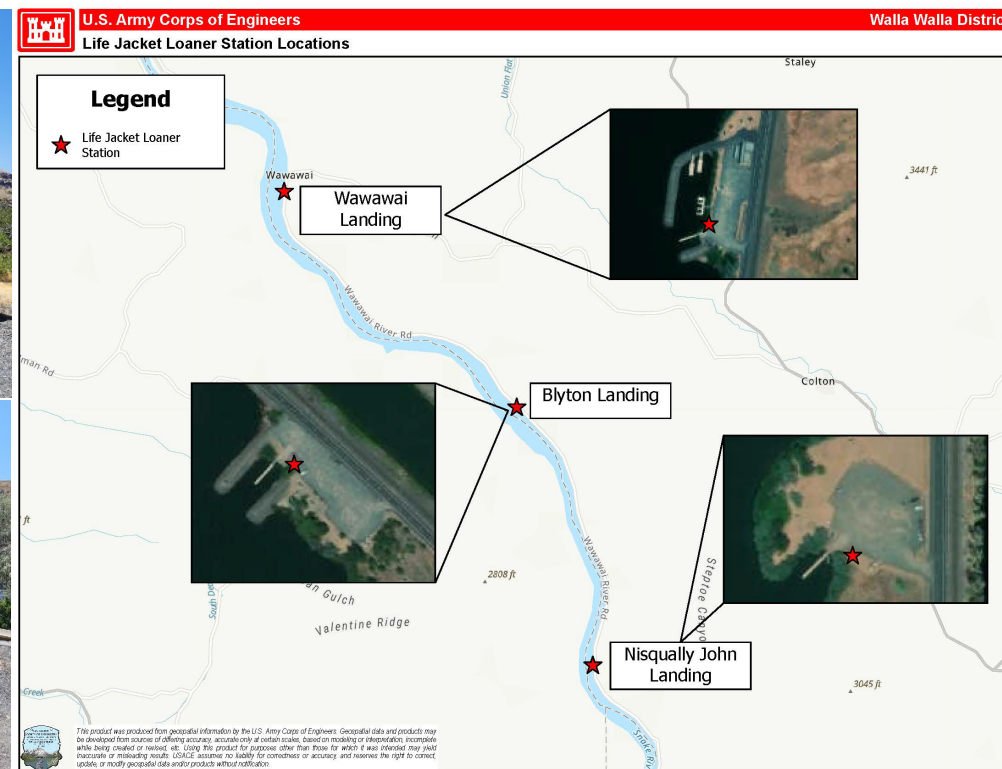
**WHAT:** Life Jacket Racks

**WHEN:** July 2023

**WHERE:** Nisqually John, Blyton and Wawawai Landings on the Snake River, Northwest of Clarkston, WA

**WHY:** Increase safety on the Lower Snake River

**WHAT'S NEXT:** Finding other ways to further our partner with Whitman County Public Health.



## Summary:

Whitman County Public Health (WCPH) approached the Lower Granite Natural Resource management (NRM) Office about creating a partnership to offer life jackets to the public at three developed recreation areas within Whitman County, Washington. Through an MOU with the Corps, WCPH utilized their own funding and staff to build and manage mobile life jacket racks at Nisqually John, Blyton, and Wawawai Landings on the Lower Granite Lake for visitors to use.





# LIFE JACKET RACK PARTNERSHIP

## LOWER GRANITE NRM, WALLA WALLA DISTRICT, NORTHWESTERN DIVISION



US Army Corps  
of Engineers®

**WHO:** Lower Granite NRM & Whitman County Public Health

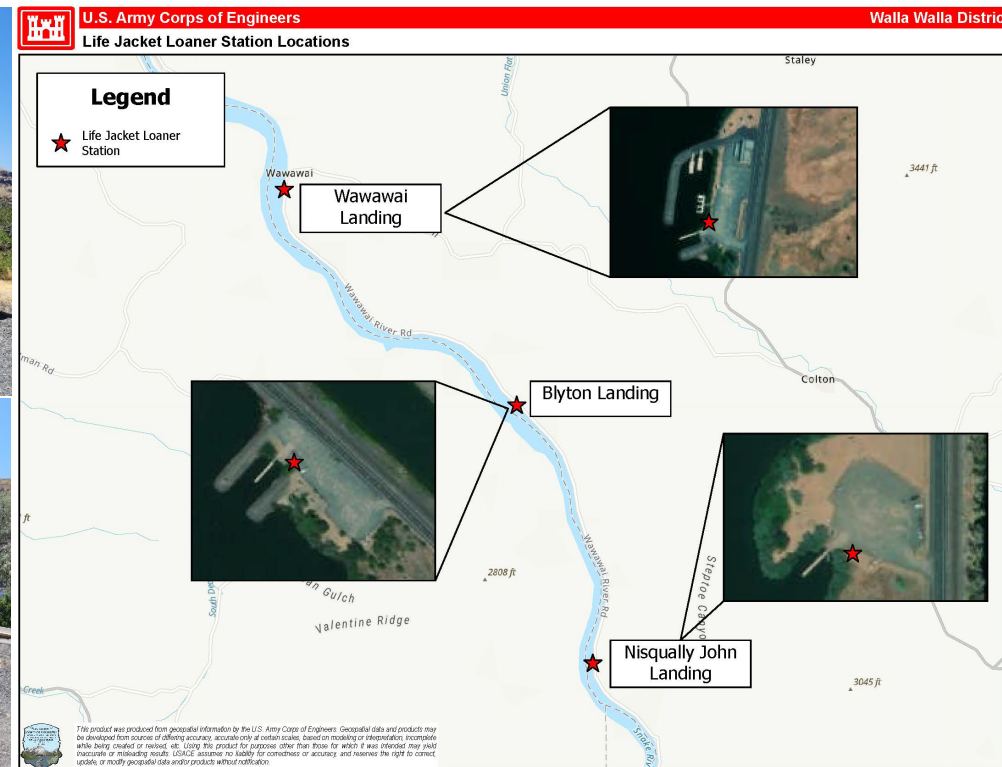
**WHAT:** Life Jacket Racks

**WHEN:** July 2023

**WHERE:** Nisqually John, Blyton and Wawawai Landings on the Snake River, Northwest of Clarkston, WA

**WHY:** Increase safety on the Lower Snake River

**WHAT'S NEXT:** Finding other ways to further our partner with Whitman County Public Health.



### Summary:

Whitman County Public Health (WCPH) approached the Lower Granite Natural Resource management (NRM) Office about creating a partnership to offer life jackets to the public at three developed recreation areas within Whitman County, Washington. Through an MOU with the Corps, WCPH utilized their own funding and staff to build and manage mobile life jacket racks at Nisqually John, Blyton, and Wawawai Landings on the Lower Granite Lake for visitors to use.